



Turbocharger Identification



Identification procedure

Garrett

Option 1:

The number has been printed in a typeshield on the turbocharger.
The partnumber we are looking for is the GA P/N number.

The manufacturers partnumber in this case is 700447-0007.
This is also the manufacturers partnumber that you can find in the digital catalogue.



Option 2:

The number has been printed in the compressor cover of the turbocharger.
The partnumber we are looking for is the GA P/N number.

The manufacturers partnumber in this case is 715294-2.
This is also the manufacturers partnumber that you can find in the digital catalogue.



Number:

Garrett numbers always consist of 6 positions before the dash.
Garrett turbocharger numbers always start with the number 4 or 7.

The numbers behind the dash can be 1, 2, or 4 digits.
If you add the number zero before the number behind the dash until you have 4 positions behind the dash, you will always get the number as we use it in the digital catalogue.



Identification procedure



Option 1:

The number has been printed in the compressor cover of the turbocharger.



Number:

IHI numbers always work with a specification, mentioned as SPEC on the typeshield.
Below the SPEC it mentions the family name of the turbo, in this case RHF3.
Together they form the number that is the manufacturers ordering number.

Example:

In this case the SPEC is VJ27.
The family name is RHF3.
Together they form the manufacturers partnumber RHF3-VJ27.

Identification procedure



TurboService

Option 1:

The number has been printed in a typeshield on the turbocharger.
The number on the typeshield below is the 5303-988-0020.



Number:

The 988 code tells you that it is a complete turbo.
They use different codes for other parts of turbochargers.

The 988 numbers are interchangeable with 970.
This means that 5303-988-0020 is exactly equal to 5303-970-0020.

Furthermore you can work with the first number as well.

The K03 should be read as 5303.

The -020 should be read as -0020.

If you put the 970 code for a complete turbo in the middle it gives you 5303-970-0020.

The manufacturer's part number in this case is 5303-970-0020.

This is also the manufacturer's part number that you can find in the digital catalogue.



Identification procedure



Option 1:

The number has been printed in a typeshield on the turbocharger.

The manufacturers partnumber in this case is 49189-01000.

This is also the manufacturers partnumber that you can find in the digital catalogue.



It is also possible that the first two digits, the numbers 49, are left out in the number.

This is because all Mitsubishi turbo related products start with 49 as the first two digits.

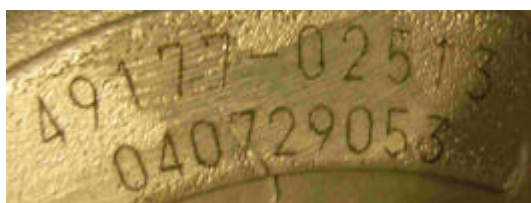


The manufacturers partnumber in this case is 49173-06100.

This is also the manufacturers partnumber that you can find in the digital catalogue.

Option 2:

The number has been printed in the compressor cover of the turbocharger.



The manufacturers partnumber in this case is 49177-02513.

This is also the manufacturers partnumber that you can find in the digital catalogue.